



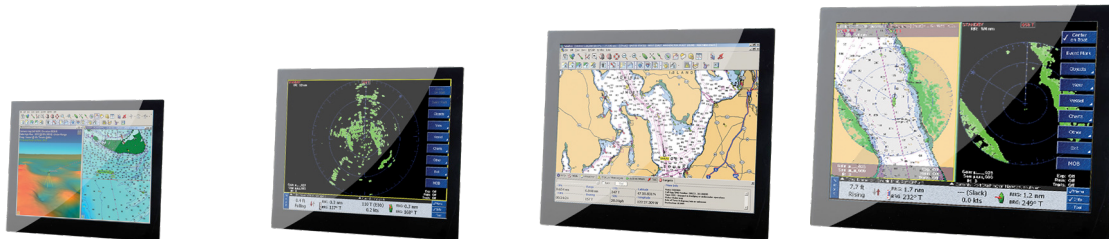
VSRT Series

Sunlight Readable Marine Displays

- Marine Displays
- 1000+ Nits Sunlight Readable
- Backlight Dimming Range 0 to Max.
- IPS Technology
- Sealed Front Panel
- 8 Inputs: 2 x DVID, 1 x VGA, 1 x DP, 4 Composite
- Parameter Adjustments Via Remote Keypad
- Standard PCAP Touch Screen
- HDCP Compliant
- Remote Control Via RS232 or IP
- 9 to 36 VDC Power
- Wide Operating Temperature



Our Vision is Your Vision



Seatronx Part Numbers	VSRT-15	VSRT-17	VSRT-19	VSRT-21W
FEATURES				
Diagonal (active area) Inch	15.0	17.0	19.0	21.5
Native Resolution (Pixels)	1024x 768	1280x1024	1280x 1024	1920x1080
Colors	16.2M	16.7M	16.7M	16.7
IPS Technology	YES	YES	YES	YES
Contrast Ratio	2000:1	1000:1	1500:1	5000:1
Sunlight Readable	1000+	1000+	1000+	1000+
Viewing Angle (left, right)	89,89	89,89	89, 89	89, 89
Viewing Angle (up, down)	89,89	89,89	89, 89	89, 89
Backlight Lifetime (Hrs)	50000+	50000+	50000+	50000+
Backlight Dimming	0 - max	0 - max	0 - max	0 - max
Inputs	2xDVID, 1xVGA, 1xDP,4xComp	2xDVID, 1xVGA, 1xDP,4xComp	2xDVID, 1xVGA, 1xDP,4xComp	2xDVID, 1xVGA, 1xDP,4xComp
Power Source	9-36V + and -	9-36V + and -	9-36V + and -	9-36V + and -
Voltage converter	9-36V (isolated)	9-36V (isolated)	9-36V (isolated)	9-36V (isolated)
Power consumption AMPS at 24vdc	2.8	3	3.5	3.5
Inlet plug dc power	Screw Terminal	Screw Terminal	Screw Terminal	Screw Terminal
Dimensions front (w x h x d) mm (inches)	365.02 x 287.21 x 76.20mm (14.371 x 11.328 x 3)	399.78 x 331.91 x76.20mm (15.70 x 13.039 x 3)	437.35 x 362.10 x 76.20mm (17.219 x 14.256 x 3)	532.92 x 328.92 x 76.20mm (20.981 x 12.950 x 3)
Cutout Dimensions (w x h x d) mm (inches)	350.37 x 274.61 x 76mm (13.794 x 10.81 x 2.992)	384.24 x 318.69 x 76.20mm (15.127x 12.547 x 3)	430.04 x 356.22 x 76.20mm (16.931 x 14.024 x 3)	518.39 x 315.03 x 76.20mm (20.409 x 12.403 x 3)
Sealing front	IP65	IP65	IP65	IP65
Mounting	Panel Mount	Panel Mount	Panel Mount	Panel Mount
Operating temperature (°C)	-20 to +70	-10 to 70	-10 to 70	0 to +60
Storage temperature (°C)	-30 to 80	-20 to 80	-20 to 80	-20 to 70
Parameter adjustment	Remote Keypad	Remote Keypad	Remote Keypad	Remote Keypad
Power on/off	Remote Keypad	Remote Keypad	Remote Keypad	Remote Keypad
Projected Capacitive touch	YES	YES	YES	YES
Optical bonding	YES	YES	YES	YES
Remote control VIA RS232 or IP	YES	YES	YES	YES



(772) 418-5035
 info@seatronx.com
www.seatronx.com

SEATRONX,
 7530 SW Jack James Dr.
 Stuart, FL 34997

ADMINISTRATION
 PO Box 1713
 Hobe Sound, FL 33475