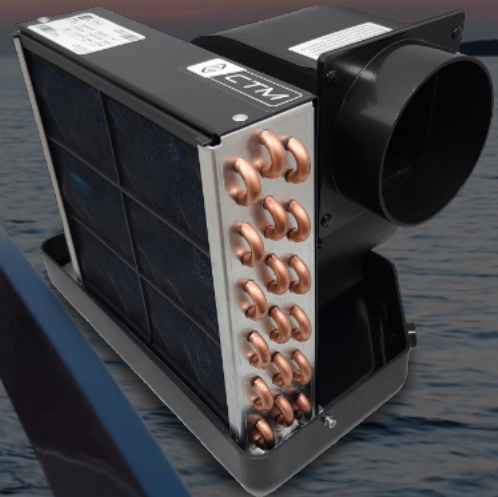




CTM-MARINE CX & EV

High-efficient condensing and evaporating units
for split-system marine air conditioners.



**10k - 12k - 16k
24k - 36k
BTU**

**6k - 8k - 10k
12k - 16k
BTU**



High-Efficient
Compressor



Compact



Cool/Heat



Wi-Fi
Thermostats



Quiet



Titanium
Condenser Coil



Corrosion Free
Base



Universal
Board



Re-usable
Air Filter



Fire Retardant
Electrical Box

www.ctm-marine.com



Air conditioners for the modern sailor.

CONDENSER - CX													
Model No.	CX10	CX10H	CX12	CX12H	CX16	CX16S	CX16H	CX16HS	CX24H	CX24HS	CX36H	CX36HS	
Capacity (BTU)	10,000		12,000		16,000			24,000		36,000			
Voltage (V)	105-120	208-240	105-120	208-240	105-120	105-120	208-240		208-240		208-240		
Cycle (Hz) / Phase (Ph)	50-60 / 1												
Input: Cool (A)	6.5	3	8.6	4.2	10.5	10.5	5.1		7.6		7.6		
Input: Heat (A)	8.5	4	11	5.2	13.5	13.5	6.6		9		9		
Fuse Max/Min (A)	25 / 16	10 / 5	30 / 20	20 / 15	40 / 25		20 / 13	20 / 15	25 / 16		40 / 25		
Locked Rotator Amps (A)	42	20	42	22	60	60	34		50		60		
Seawater Inlet (in/mm)	5/8 / 9.52												
Seawater Outlet (in/mm)	5/8 / 9.52												
Seawater Flow (GPH)	250				500				500		750		
Refrigerant Type	R410A												
Net Weight (lbs/Kg)	35 / 16				42 / 19				60 / 27		81 / 37		
Width (W) in/mm	8.67 / 220				9.8 / 250								
Height (H) in/mm	13.5 / 344						15.4 / 392			17.9 / 455			
Depth (D) in/mm	13.5 / 344												

S = Soft Start H = 220 v HS = 220 v unit with Soft Start

EVAPORATOR - EV											
	EV6	EV6H	EV8	EV8H	EV10	EV10H	EV12	EV12H	EV16	EV16H	
Capacity (BTU)	6,000		8,000		10,000		12,000		16,000		
Voltage (V)	105-120	208-230	105-120	208-230	105-120	208-230	105-120	208-230	105-120	208-230	
Cycle (Hz) / Phase (Ph)	50-60 / 1										
Fuse Max (A)	2		2		3	2	3	2	4	2	
Input Rotor Amps (A)	0.82	0.42	0.82	0.42	1.5	0.65	1.5	0.65	1.6	0.82	
Locked Rotor Amps (A)	0.91	0.5	0.91	0.50	1.8	0.8	1.8	0.8	2	1	
Discharge (in/mm)	¼ / 6.35										
Suction (in/mm)	3/8 / 9.52								½ / 12.7		
Seawater Flow (GPH)	250								500		
Refrigerant Type	R410A										
Net Weight (lbs/Kg)	15 / 7		14 / 6.4		20 / 9			24.25 / 11			
Duct Ring (in)	4		5				6				
Width (W) in/mm	12.6 / 320				16.1 / 410			16.9 / 430			
Depth (D) in/mm	8.9 / 227				10.7 / 273			11.6 / 295			
Height (H) in/mm	10.8 / 275		11.2 / 285		13.4 / 340			13.9 / 354			

H = 220 v

CX

EV

