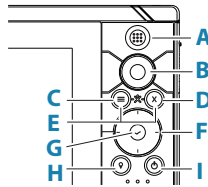


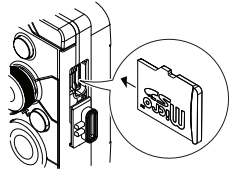
Front controls



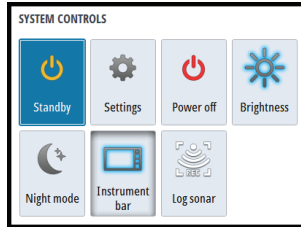
A	Pages/Home key - press to open the Home page for page selection and setup options.
B	Rotary knob - turn to zoom or scroll the menu. Press to select an option.
C	Menu key <ul style="list-style-type: none"> • Press to display the active panel's menu. • With a page displayed, press and hold to display the Settings dialog. • On the Home page, with a highlighted split page, press and hold to change the split page orientation to horizontal or vertical.
D	Exit key - press to exit a dialog, return to previous menu level, and clear the cursor from the panel.
E	MOB - press simultaneously the Menu and Exit keys to create a MOB waypoint at the vessel's position.
F	Arrow keys With no menu active: press to activate the cursor or to move the cursor. Dialog and menu operation: press to navigate through menu items and to adjust a value. Toggle the active screen in a split page.
G	Enter key <ul style="list-style-type: none"> • Press to select an option or to save settings. • In a split page press to activate the cursor.
H	Waypoint key <ul style="list-style-type: none"> • Press to place waypoint at vessel position or at cursor position when cursor is active. • Press and hold to open the Plot dialog from where you can add or manage waypoints, routes and tracks.
I	Power key <ul style="list-style-type: none"> • Press and hold to turn the unit ON/OFF. • Press once to display the System Controls dialog. • Multiple short presses to toggle through the predefined dimming levels.

Card reader

- **Note:** Do not download, transfer or copy files to a chart card. Doing so can damage chart information on the chart card.



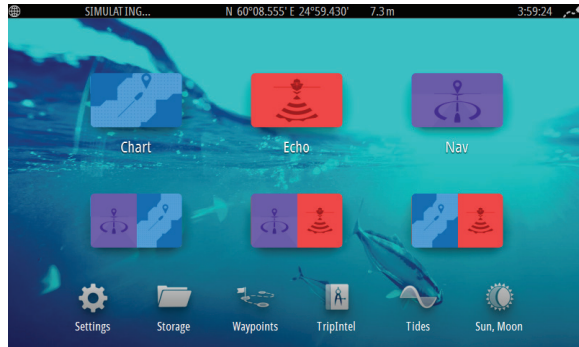
System controls dialog



Display illumination

- Adjust the display backlight from the System Controls dialog
- Cycle the preset backlight levels by short presses on the Power key

The Home page



Displaying a page



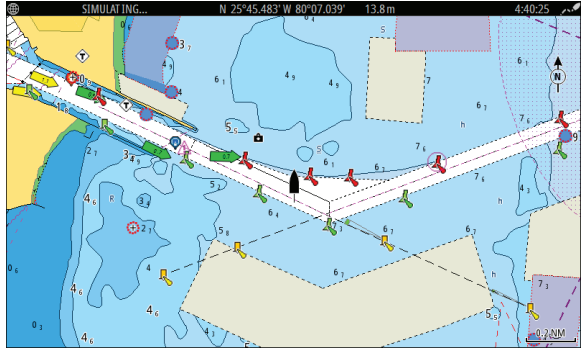
A

A Page icons

B

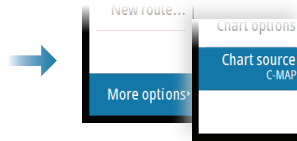
B Predefined split pages

The chart panel

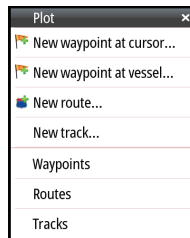
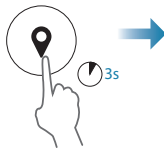


- Zoom the image by using the rotary knob
- Pan the image in any direction by using the Arrow keys
- Display item information by positioning the cursor on an item and then pressing the rotary knob or Enter key

Selecting chart source



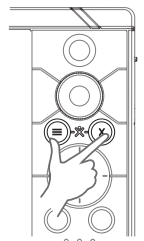
Managing waypoints, routes and tracks



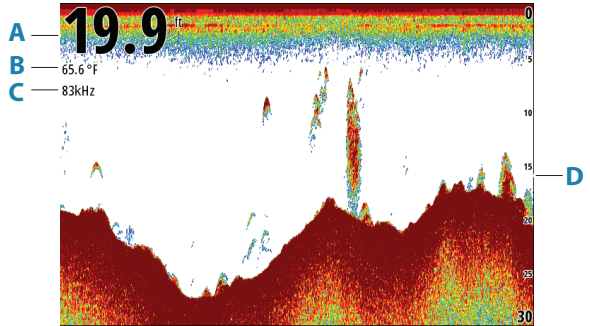
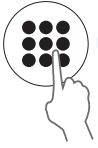
Creating a Man Over Board waypoint

Activate a MOB (Man Over Board) waypoint by simultaneously pressing the Menu and Exit keys.

Cancel the navigation to a MOB waypoint from the menu.



Echosounder page



- A** Depth
- B** Temperature
- C** Frequency
- D** Range scale

Zoom the image using the rotary knob.

→ **Note:** Only supports 83/200 kHz med / high chirp frequencies.

Product manuals

For the full Operator manual, technical specifications and declarations, refer to the product website on: www.simrad-yachting.com

